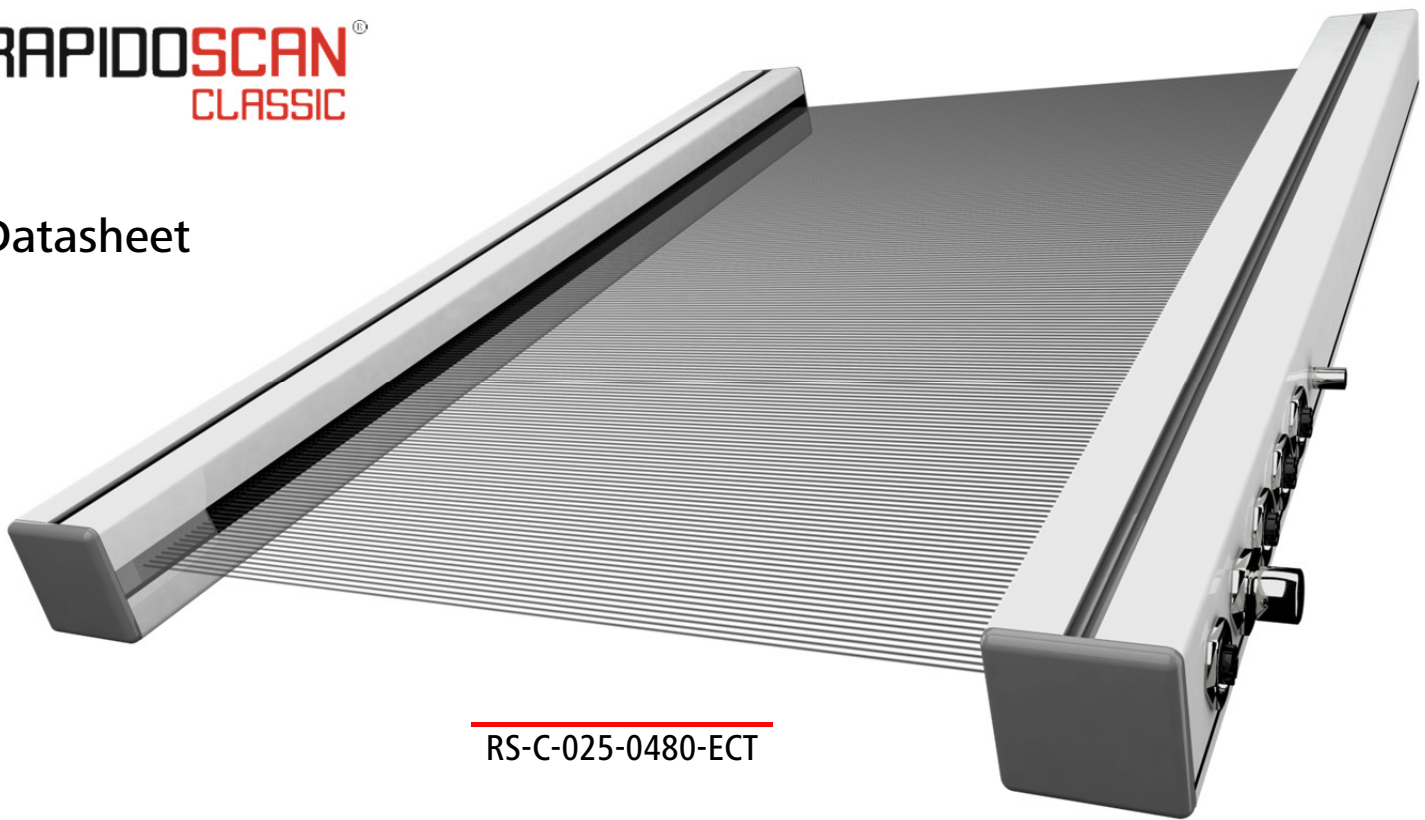


Datasheet



RS-C-025-0480-ECT

SPECIAL FEATURES

- + Especially high resolution of 2.5 mm
- + Virtually dot-shaped beam geometry arranged on a single optical plane
- + Extremely high measurement rate:
Parallel beam > 1040 measurements/sec.
- + EtherCAT slave interface with access to all measurement data from each measurement CoE (CiA DS-301)
- + Integrated dual port EtherCAT switch (In Port / Out Port)
- + EtherCAT fieldbus interface ensures the availability of the object data from each individual measurement
- + Transparent objects can be evaluated at full measurement rate
- + Connection port for rotary encoder
- + Standard industry M12 plug connectors
- + Corrosion-resistant and easy to clean plastic housing

DATA TABLE

Technical features

Technology	Emitter / receiver
Purpose	Measuring automation light curtain with real time fieldbus connection
Beam spacing	2.5 mm
No. of diodes	192
Monitoring height	480 mm
Operation range	0 ... 2500 mm
Measurement cycle	0,96 ms with parallel beam if all beams are activated

Electrical data

Protection class	III
Supply voltage	18 ... 30 VDC
Power consumption	approx. 420 mA (@24 VDC), no external loads
Initialization time	approx. 30s

Interfaces

Switch output	2 x PNP, NPN or PP, each 100 mA max., Overload and short-circuit protected
Data interface	EtherCAT with integrated dual port EtherCAT switch, 2 x M12 jack / 4-pin / D-coded

Mechanical data

Construction	Frame: fibre-reinforced polyamide / Window: transparent polyamide
Dimensions	40 x 40 x 507,5 mm; Additional space required in the plug area, see dimensioned drawing
Weight	T: 0,57 kg R: 0,71 kg
Environmental rating	IP67

Environment

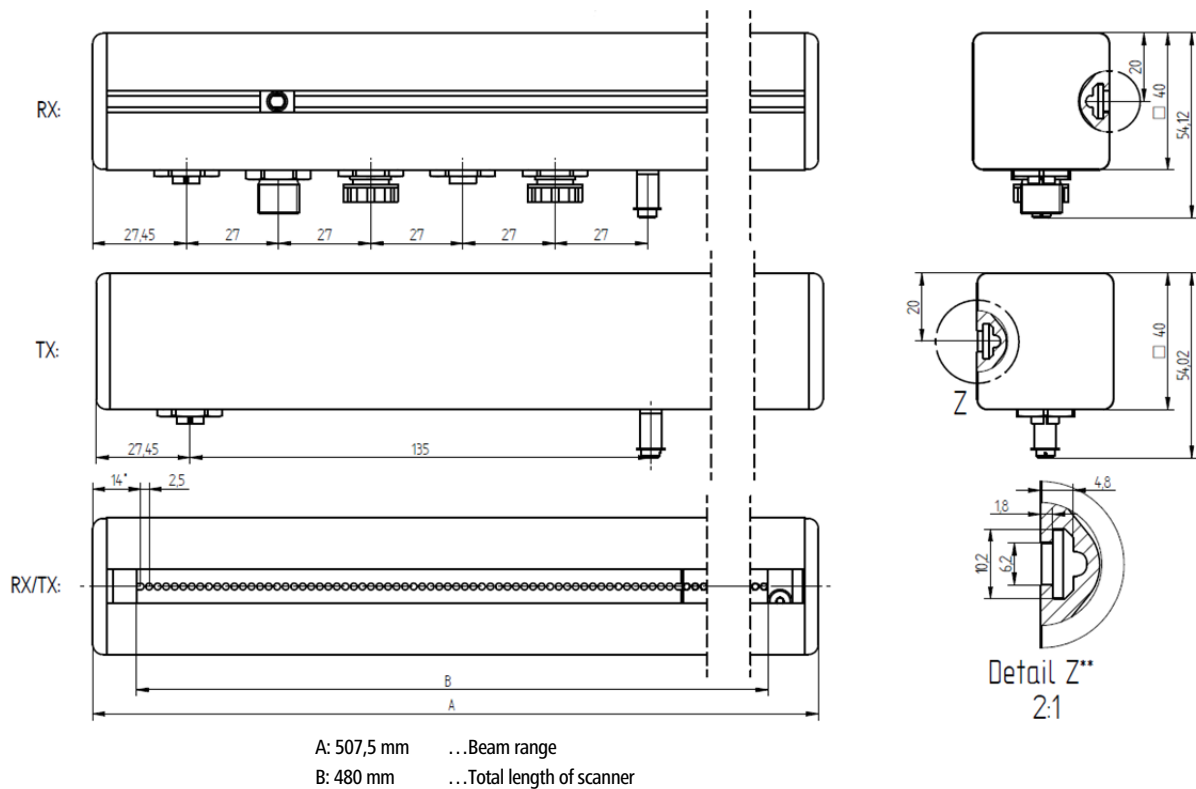
EMC	according to EN 60947-5-2
Ambient temperature	operation: -30°C...+55°C / storage: -40°C...+70°C
Vibration resistance / shock proof	according to EN 60947-5-2

EtherCAT[®]

EtherCAT[®] is registered trademark and patented technology,
licensed by Beckhoff Automation

PRACTICAL BENEFITS

- + Higher conveyor belt speeds
 - + Increased object throughput
 - + Smaller beam geometry and layout of the beams on a single optical level permit more precise object localization
- + More detail-rich object mapper via analogue object evaluation
 - + The integrated dual switch permits linear wiring. This reduces the amount of cabling work and no external switch is required.
 - + direct connectivity for rotary encoder



PLUGS AND SIGNALS

- X1** Synchronization and power supply to emitter unit, M12 jack (female) / 8-pin / X-coded CAT6A
- X2** Power supply input, switching outputs / encoder inputs, trigger input, M12 plug (male) / 5-pin / A-coded
- X3** Power supply output to downstream RapidoScan, service interface, trigger output, M12 jack / 5-pin / A-coded
- X4** EtherCAT (IN), M12 jack / 4-pin / D-coded
- X5** EtherCAT (OUT), M12 jack / 4-pin / D-coded
- X6** FE connection, M4 screw connection

